



HILIVING
ESTATES

Proudly Launching

Rain by the Farm

KARNATAKA'S FIRST PREMIUM MANAGED COFFEE
AND PEPPER FARM WITH 4-STAR RESORT





**Everyone needs a place of sanctum,
A Place where you can immerse yourself in nature,
A Place Where Your Presence is felt and Your voice is heard.**

**And What can be a better choice than Owning a
Farmland and Build Your Dream Private Farmhouse?**





Move to a Serene Escape Every weekend from the hustle and bustle of the city. Enjoy Quality time with your Partner and Family. Give Yourself a Break, Just Relax and immerse yourself in the lap of nature.





ABOUT US :

HiLiving Estates is proudly launching Rain By The Farm- a managed coffee & pepper estate farmland in the heart of Sakleshpur , spread over 50 Acres. We have successfully completed 50 acres of Farmland in Kerala.

At Rain by the Farm, We believe that nature is not a place to visit, it is our home to stay. We have created opportunities for people to come close to nature. We are decoding the true joy of staying close to nature and encouraging and educating people about the art of farming.





Western Ghats, Hanbal Sakleshpur



ABOUT SAKLESHPUR :

Sakleshpur is a hill station town in Hassan District of the South Indian state of Karnataka. It is a beautiful town located in Western Ghats on Bangalore-Mangalore Highway. Sakleshpur is located on the border of Malnad and Bayaluseemae in Hassan district. It receives heavy rainfall from the southwest monsoon and because of the temperate climate; this place is blessed with huge amount of coffee, tea, cardamom, and pepper plantations. In fact, Sakleshpur Taluk reports for around one-third of cardamom production in India.



WHAT MAKES US DIFFERENT?

Owing your dream coffee estate farmland requires more than just capital. Choosing the right location for your coffee estate farmland can be challenging when you balance every need. HiLiving Estates has made this decision easy for you.

CONVENIENCE WITH SERENITY:

Rain by The Farm by HiLiving Estate is a managed coffee and pepper estate farmland located in the western ghats of Sakleshpura. The project is located in a prime location which is close to all major tourist places and filled with Lush Greenery, Lake, Water streams and Mesmerizing Views. Buying a coffee estate in Rain By The Farm could be one of the best decisions of your life!



MAINTENANCE:

- ☛ Own a Personal Coffee & Pepper Estate - Professionally Managed by Us.
- ☛ We Maintain your Coffee Yield, Pepper Yield and the Security of your Estate.

FLEXIBILITY:

WE OFFER COFFEE ESTATES WITH CLEAR TITLES IN MULTIPLE SIZES & MANAGE THEM PROFESSIONALLY FOR YOU.

- ☛ Available in Different Dimensions
- ☛ Options to choose among Different Farmhouse Designs.
- ☛ Choice to Resell when you want.

TRUST AND ACCOUNTABILITY:

- ☛ Clear Titles certified by Top Lawyers.
- ☛ Individual Free Hold Property.
- ☛ Individual Coffee and Pepper Estate Titles.



PEACE OF MIND:

- ☞ We're a team of experts on a mission to help you earn a high passive income without the need to worry about the day-to-day operations that come with running a farm.

WAKE UP RESTED:

- ☞ With round-the-clock monitoring, you can wake up each day feeling safe and sound while knowing your assets are in good hands.

UNCOMPLICATED:

- ☞ HiLiving Estates take care of all the paperwork, farmland management, and payments so you can reap the benefits of owning farmland



PLANTATIONS

CROPS ROBUSTA

Growing in a variety of climates and altitudes, robusta coffee is a hardy plant that may be the key to sustainable coffee production in the future. With natural pest resistance due to its high caffeine content, robusta coffee is also a more environmentally friendly crop that requires less or no pesticides.

ARABICA

Arabica beans have a smoother, sweeter, and more nuanced flavour than other coffee types, with notes of fruit, chocolate, nuts, and caramel. They are also lower in caffeine and more acidic, making them less bitter and easier to drink.

PEPPER

The hot and humid climate of sub-mountainous tracts of the Western Ghats is ideal for its cultivation. It grows successfully between 20° north and south latitudes, and from sea level up to 1500 m above sea level. The crop tolerates temperatures between 10° and 40°C.



Organic Fruits & Vegetables

ORANGES, APPLES, PEARS, LEMONS, VINE TOMATOES, CUCUMBERS, AVOCADO'S, DATES, PINEAPPLE, GINGER, BELL PEPPERS, CHILI'S, SWEET POTATOES, POMEGRANATES, KIWI'S, AUBERGINES, CHICORY, BEANS, BOK CHOY, MUSHROOMS, GARLIC, CABBAGE, ONIONS, MANDARINS, GRAPEFRUIT, LIMES, MANGO'S, GRAPES, PUMPKINS, BLUEBERRIES, PHYSALIS... ALL 100% ORGANIC!



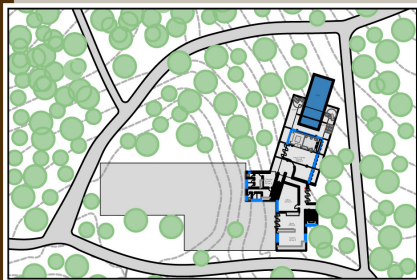
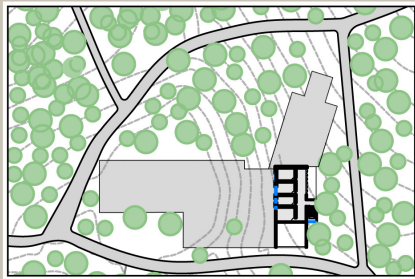
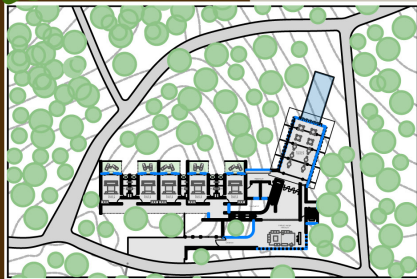


PLANS FOR THE UPCOMING 4 STAR RESORT:

☞ We are coming up with an innovative idea of building a Lavish 4 Star Resort inside the property which makes the project a convenient weekend getaway for Your Friends and Family. The entire property is well designed and well maintained with attentive full-service staff to cater to all your needs.

☞ Along with this, we have designed an exclusive range of amenities like a swimming pool, volleyball court, Bird View Point, Farming and Animal Interaction zone, Yoga and meditation centre, pet area, kid's play area, Jogging & Cycling Track, Lakeside walking area, Steam side deck, and many more to curate an indomitable luxurious experience for you. The location is ideal for you and your family to spend time in nature and gain from nature's assets.

RESORT PLAN



RESORT PLAN



LAYOUT PLAN :



Why Rain By the Farm?

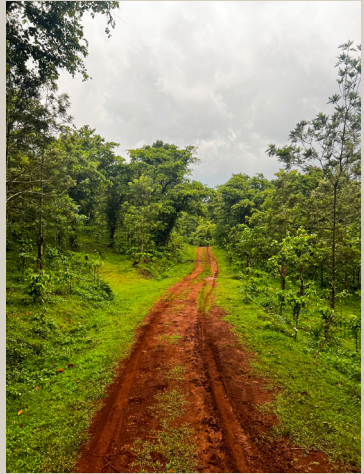
- ∞ Wide 30 Feet Front Road i.e. Almost Double Than Any Other Nearby Project
- ∞ Access to the Lavish 4* Resort Spread over 10 Acres
- ∞ 30+ World-Class Amenities
- ∞ Prime Location-Quick 3x Land Appreciation in Just 2 Years
- ∞ 1 Acre is dedicated Specially to Vegetable and Fruits Farming
- ∞ 2 Acres of Lake With Mesmerizing Views
- ∞ 365*7 Days Water Stream throughout the Property
- ∞ Morning Walk and Rain Dance with Peacocks
- ∞ Guaranteed Yield Returns
- ∞ Spectacular Views Put "Ice on the Cake" To Your Innovative Farmhouse Ideas
- ∞ Special Discount For Women Buyers



Plan a Weekend Trip with Your Family
Spend Quality Time with Your Partner
Immerse Yourself in The Lap of Nature
Give Relaxation To Your Mind, Body and Soul



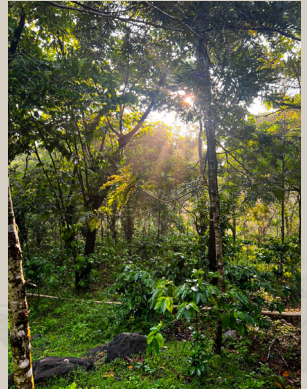
ACTUAL SHOT AT THE PROPERTY



Rain by the Farm



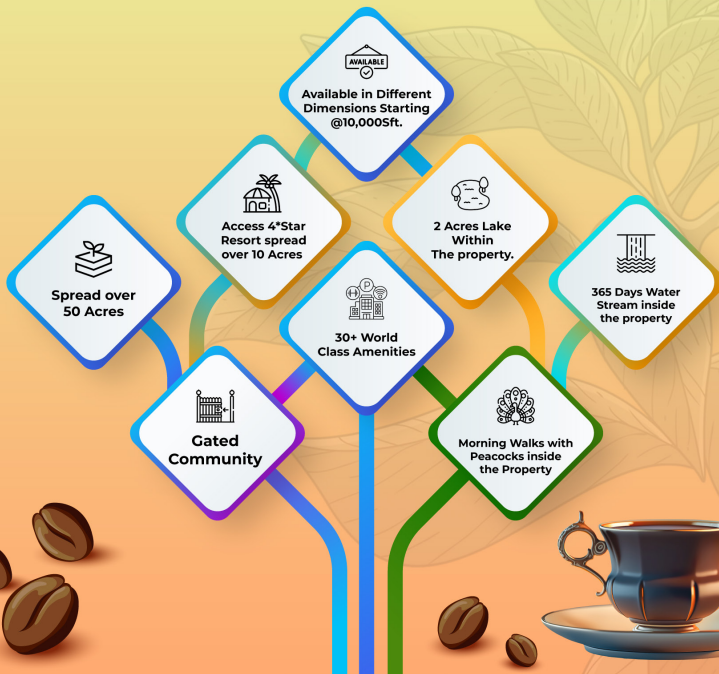
ACTUAL SHOT AT THE PROPERTY



Rain by the Farm



SPECIFICATIONS



AMENITIES



Infinity Swimming Pool



Volleyball Court



Open Gym



Children's Play Area



Stream Side Deck



Organic farming zone



Open party lawn



Indoor games



Farm Activities



Trekking



Bird View Point



Cattle Feeding Area



**Work From Farm Zone
With Wi-fi Access**



Yoga &. Meditation Centre



Jogging & Cycling Track



Lakeside Walking Area



Animal Interaction Zone



Toddler's Pool



Restaurant



Resort membership



Golf Court



Pet Area

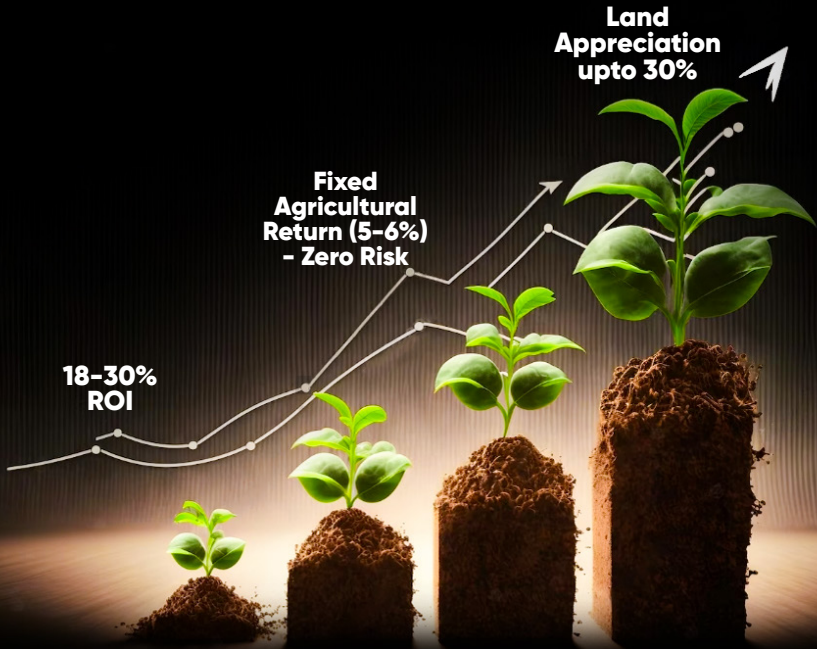


BENEFITS OF THE LOCATION :

- ☕ **Most Popular Hill Station in Karnataka.**
- ☕ **Suitable location to grow rich crops like Coffee & Pepper.**
- ☕ **Ideal place for farmhouse with picture-perfect views.**
- ☕ **Perfect place for Organic Farming.**
- ☕ **All attractive tourist places are nearby.**



INVESTMENT BENEFITS :



**STARTING
FROM
10,000 Sft.**

**START DREAMING OF OWNING A PRIVATE
FARMHOUSE AND WE WILL TURN INTO
A REALITY. IT'S OUR COMMITMENT**



+91 73381 11133

Note: Pls Ask for actual images and photos of RAIN BY THE FARM.